

SPONSORS WHO OFFER DISCOUNTS UP TO 10%  
WITH YOUR MEMBERSHIP CARD.

## Program: Elements of Design and Exhibit Fabrication

Members of the exhibition design team at the Nelson-Atkins Museum of Art will share tidbits about their design process, materials, and components from various projects at the museum including artworks, exhibitions and galleries.



## President's Corner Submitted By Rob Young

It is May and of course April snow storms bring May \_\_\_\_? Not sure what they bring but a cold April and start of May have extended "bonfire season" a bit for me. What is "bonfire season" you ask? Well, if you enjoy woodworking as a hobby AND own a fireplace or have a fire-pit outside, you can take advantage of your hobby twice over. I tend to practice techniques on small pieces or in scrap several times before committing to a project. This means I have lots of little pieces, failed experiments, shavings, chips and just plain odd bits accumulating over the year. But when "bonfire season" is upon us, I can clean out the mess and enjoy my work a

second time. And since many of these are failed experiments, it is very satisfying to watch them burn.

As I mentioned above, I subscribe to the test-and-experiment school of learning rather than the grip-it-and-rip-it school. But no matter which you prefer, you should always be trying new techniques, new materials and new ideas. The KCWG Open-Shop schedule and our recent addition of new equipment should help you expand your skill set. The wide-belt sander is up and running, so maybe now is the time to make that giant end-grain kitchen island top. Ask Erwin how easy that would be. Or at least think about making some end-grain

cutting boards. And when Erwin and Chuck picked up the sander, they also made off with a gang-drill at no extra cost. So does anybody out there need adjustable shelf cabinets or bookcases? It works great, just ask Barry Pennington.

Keep bringing in your latest triumph for Show-and-Tell. Maybe you should think about offering a clinic or workshop to demonstrate your mastery of some new skill. We may yet schedule a "Carve Your Own Snow Shovel From A Tree" workshop before the end of May. The difficult part is getting the fancy fretwork and carving for the handle just right.



Apollo Sprayers  
[www.hvlp.com](http://www.hvlp.com)



Schutte Lumber  
(816) 753-6262



Woodcraft Supply  
(913) 599-2800



Metro Hardwoods, Inc.  
(816) 373-1710



American Grinding & Sales  
(816) 561-1776



Overland Tool, Inc.  
7905 Nieman Road, 66214  
913-599-4044



Merit Industries  
913-371-4441 or  
800-856-4441



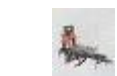
Santa Fe Glass  
800-371-4527



Strasser Hardware  
(913) 236-5858



Woodline  
(800) 472-6950



Cedar Creek Sawmill  
(913) 638-1173



White Crane Images  
Neal Shoger  
(816) 781-4000



Wood By Design  
(913) 962-0159



Andre's Tearoom  
5018 Main St  
Kansas City, MO 64112  
(816-561-6484



Eagle Jigs, L.L.C.  
14221 Peterson Road  
Kansas City, MO 64149



Re-View  
1235 Saline St  
N. Kansas City, MO 64116



John Van Goethem  
913-631-1094



Custom Woods LLC  
1-800-BUNKBED  
[www.1800bunkbedkc.webs](http://www.1800bunkbedkc.webs)

# MEMBER PROJECTS



Canoe Paddles by Mike Mollhan

made with ash, basswood, cedar, walnut, finished with fiberglass Mas  
-epoxie challenges bent shafts



Tool Box by Pete Cavo  
made with maple



Strang Carriage House by Russ  
Hayden made with cement,  
cedar, hardware cloth, styrene  
finished with grout & sealer



Oval Table by Tom Smoller  
Made with ash & maple  
Finished polyurethane  
Point of interest design



# MEMBER PROJECTS



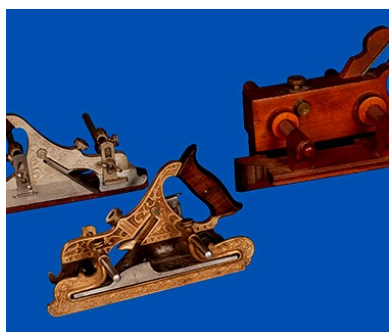
Pipes by Anthony Harris

made with briar and acrylic

finished with aniline dyes & car-

rub

point of interest threaded bows & hollow chamber



3 Planes by Bill Johnson



Box by Ken Grainger

made with walnut

finished with shellac & wax



Pizza Board by Bob Edsall

made with cherry and walnut

finished with boos mystery oil

point of interest my first project for NC101

challenges shaping handle after glue up, should have band sawn first!



Wine Rack by Jerry Stanley

made of hickory, finished with Danish oil, Polycrylic, point of interest sliding shelf for humidior



Box by John Tegeler

made with oak, walnut, mahogany, birch, maple

finished with oil

## OFFICERS

All email addresses end with

[@kcwoodworkersguild.org](mailto:kcwoodworkersguild.org)

**President:** Rob Young

(785) 218-5636

[President@](mailto:President@kcwoodworkersguild.org)

**Vice President:** Chuck Saunders

[Vicepresident@](mailto:Vicepresident@kcwoodworkersguild.org)

**Secretary:** Gary Creek

913-262-7413

[Secretary@](mailto:Secretary@kcwoodworkersguild.org)

**Treasurer:** Gary Mielke

[Treasurer@](mailto:Treasurer@kcwoodworkersguild.org)

**Member at Large:** James Stuart

(479) 616-9188

## ALSO

**Cub Reporter:** John Tegeler

**Library:** Barry Pennington

**Newsletter Editor:** Ian Newlin

[Editor@](mailto:Editor@kcwoodworkersguild.org)

**Webmaster:** Ian Newlin

[Webmaster@](mailto:Webmaster@kcwoodworkersguild.org)



## Increase Your Woodworking Skill and Knowledge

KANSAS CITY WOODWORKERS' GUILD

*The Kansas City Woodworkers' Guild is a great source of information for every level of woodworker from amateur to professional. At monthly meetings, members can improve woodworking techniques and skills through hands on demonstrations, guest speakers and discussions.*

*The Guild supports its own Woodworking Shop, publishes a monthly newsletter with articles of interest, reports of events, notes, & comments, sends out for sale/wanted ads and sponsors' specials by E-mail. Many of our sponsors give members special prices and/or discounts on purchases of select tools and materials.*

## DIRECTORS

**Assets:** Erwin Kurtz

(816) 352-1188

[Assets@](mailto:Assets@kcwoodworkersguild.org)

**Communication:** Ian Newlin

[Communication@](mailto:Communication@kcwoodworkersguild.org)

**Membership:** George Rexroad

[Membership@](mailto:Membership@kcwoodworkersguild.org)

**Events:** Tim Locke

(816) 392-9889

[Events@](mailto:Events@kcwoodworkersguild.org)

**Safety:** Chuck Slagle

[Safety@](mailto:Safety@kcwoodworkersguild.org)

**Sponsorship:** Craig Arnold

[Sponsorship@](mailto:Sponsorship@kcwoodworkersguild.org)

**Training:** Mark Waugh

(913) 636-7900

[Training@](mailto:Training@kcwoodworkersguild.org)

**Programs:** Cliff Schuette

[Program@](mailto:Program@kcwoodworkersguild.org)

## Upcoming Events and Important Dates

Sunday, May 19 --9pm Shop Safety Training

Sunday, July 21 --9pm Shop Safety Training

Sunday, September 22 --9pm Shop Safety Training

Saturday, October 19 --9pm Shop Safety Training

Sunday, November 24 --9pm Shop Safety Training

