

Kansas City Woodworkers' Guild

Increase your Woodworking skill and knowledge

KCWG Sponsors
Check 'em out!



Members News

President's Corner

Big Changes Coming Up
2016 is here and 2015 is fading from memory. We had a good year but you will be spared the retrospective on the year that was. I am much more excited about the year that lies ahead of us. We have hinted around the last couple of months but now I am going to fill you in on all the plans.

At present the Guild membership is over 640 (renew now before you forget), our growth is in large part due to our offering of a great shop space at a very reasonable yearly dues. The dues are kept low through the great volunteer contributions of our members on the different fund raising projects. The availability of a fully equipped shop appeals to our members who live in less shop friendly houses and apartments as well as those who have downsized their shop or decided they can't have a shop because of some misguided belief that cars should kept be in the garage. Our low membership dues allow the new woodworker to "give it a try" and develop the basic skills and confidence without feeling like they are spending a lot of money and still not able to make anything.

Probably the biggest reason for our success is our membership. Our members present a welcoming, nurturing environment that allows each of our members to develop their skills at their pace and embrace an individuals accomplishment based on their growth and not some uniform standard measure. Encouraging words and positive reinforce-

ment are the keys to sharpening skills and developing a love of wood-working.

It doesn't hurt to have classes to guide you along and time in the shop to work on your projects. As we have expanded our Open Shop schedule to average 150+ hours a month of availability we have run into a couple of hitches. One, there are times when we still have people waiting in lines to use the machines during our busiest days. Two, when we offer a class we end up having to cancel the Open Shop so that the class can use the shop. We need to make the equipment more available and have more classes, but how?

Add another shop of course! We are taking the space where the chairs are set up for our meetings and turning it into a duplicate shop. This shop will be completely mobile so that all of the equipment will be moved out of the space for meetings. The shop will consist of:

- 2 SawStop table saws
- 8" Powermatic jointer
- 15" Jet planer
- 18" Parks bandsaw
- 14" Powermatic bandsaw
- Powermatic Mortising machine
- Steel City drill press, and
- 2 bright orangeish yellow Oneida cyclone dust collectors.

We are also adding 5 new work tables, so there are more places to set

up your project. Some of this equipment sounds familiar and it should. We are moving it from the existing shop (planer, jointer). In an effort to expand our capabilities we are replacing these machines to offer more capacity with a Grizzly 16" jointer, and a Grizzly 20" planer.

When there are classes the duplicate shop will be for their exclusive use. When there is not a class, the entire shop will be available for Open Shop use. The chairs will have to be put up and like we have been doing with the folding chairs, now there will be carts to place all of the non folding chairs on and store them in the alcove with the AV desk. We are getting a heavy duty curtain that will close off the entire alcove so the chairs and AV equipment will be kept in a dust free (kinda) environment. Another perk is that because the chairs will stay clean and the meeting area will be emptied and easily swept before meetings, the meeting area will be cleaner with the new shop addition.

We are hoping to get this all done in January. If you have time, Erwin could probably use a hand.

Thanks,

-Chuck Saunders, President



	Schutte Lumber (816) 753-6262
	Woodcraft Supply (913) 599-2800
	Metro Hardwoods, Inc. (816) 373-1710
	Andre's Tearoom 5018 Main St Kansas City, MO 64112 816-561-6484
	Eagle Jigs, L.L.C. 14221 Peterson Road Kansas City, MO 64149
	All six locations 800-371-4527
	Apollo Sprayers www.hvlp.com
	Strasser Hardware (913) 236-5858
	Woodline (800) 472-6950
	Cedar Creek Sawmill (913) 638-1173
	John Van Goethem 913-631-1094

Katalyst

GROUP INC.

Tom The Sawyer
Portable
Sawmill Service
www.TomTheSawyer.net

SUPERIOR GRINDING LLC
KYLE ALEXANDER
5312 BAYTOWN RD
BAYTOWN, MO 64133
OFFICE: 816-561-8665
CELL: 913-638-2029
FAX: 816-561-8666
www.superiorgrinding.net

Dust and Your Lungs

Our lungs are constantly exposed to the wood dust we breathe in the shop. The lungs are responsible for bringing oxygen from the atmosphere into our body through a series of branching air tubes and exchanging it for carbon dioxide that is released back into the atmosphere. Even though the lungs can clear themselves, excessive inhalation of wood dust, over time may result in health issues.

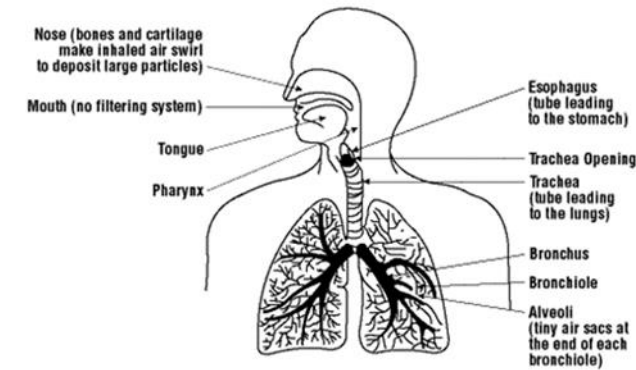
What happens when we breathe in dust?

When a person breathes in dust particles that are suspended in the air, they enter the lungs through the nose, however not all of the dust reaches the lungs. The nose is an efficient filter that stops most large dust particles and does not allow large particulates of dust to enter the lungs. This dust will remain in the nose until it is removed mechanically by blowing the nose or sneezing.

The smallest dust particles will succeed in passing through the nose to reach the windpipe and enter into the small air tubes that lead to the lungs. These tubes are called bronchi and bronchioles. Tiny hairs called cilia, cover the walls of the air tubes that produce a mucus that catches most of the dust particles. The dust suspended in the mucus and is moved upward and out into the throat from the lungs where it is either coughed up and spat out, or swallowed.

How can we protect the lungs from dust?

A well designed dust collection system improves the air quality in



the shop to help increase productivity and make the shop a more enjoyable environment to work in.

The best method of controlling wood dust is by using a combination of ceiling-hung or portable air exhaust ventilation system that filters the ambient air and local exhaust ventilation. The most effective method of capturing wood dust is with local exhaust ventilation which captures and removes dust at or near its source. For sanders, shapers, routers and other machines that produce a greater amount of dust, exhaust collection ports should be located as close as possible to the source that captures the dust.

For local exhaust ventilation systems to provide protection they must be properly maintained and periodically cleaned, inspected, and repaired as necessary.

Other engineering controls should be considered for smaller shops if the methods above cannot be used. Some examples are:

- Collecting dust by using a vacuum for small tools at the dust producing source.
- Use of vacuums instead of brooms for cleaning.

Good housekeeping and frequent shop cleaning.

Personal protective equipment should not be a substitute for proper dust control and should be used only where dust control methods are not effective or are inadequate. If you elect to use a respirator, consult your physician to ensure that you are able to use a respirator. It is important to review [Respirator Selection](#) and understand the [Respirator Care](#) that is needed of a respirator used in the shop.

-Chuck Slagle, Safety Director



More Sponsors!

David Roth
Woodwork
913-481-9016

Intarsia By Day



Marquetry By Night

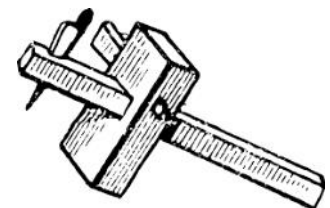
chefroth@everestkc.net



Re-View
1235 Saline St
N. Kansas City, MO 64116



Wood By Design
(913) 962-0159



Lie-Nielsen
TOOLWORKS
INC.



**HAND TOOL
EVENT**

COME SEE HOW GREAT HAND TOOLS
MAKE YOUR WOODWORKING EASIER!

HOSTED BY
**KANSAS CITY
WOODWORKERS'
GUILD**

3189 MERCIER STREET
KANSAS CITY, MO 64111

JANUARY 15 & 16, 2016

FRIDAY (10-6)
SATURDAY (10-5)

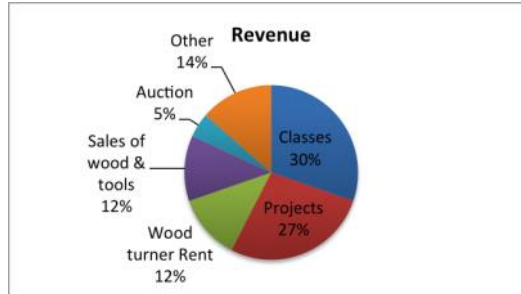
FOR MORE INFO:
800-327-2520
WWW.LIE-NIELSEN.COM

Treasurer's Report: YearEnd Financial Review

The Guild had another successful year. We increased our bank balance by \$17,000 for the year. That increase is the result of a lot of volunteer hour from many members and allows us to keep the membership dues as low as they are. If you didn't do your share in 2015 resolve to volunteer in 2016. It's only by distributing the workload that we can prevent member burnout and continue our success.

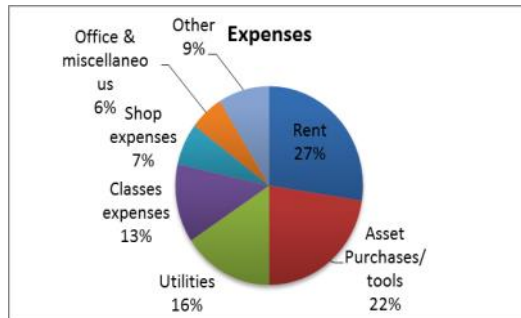
Revenue came from the following areas:

- Membership Dues 34%
- Classes 20%
- Projects 18%
- Wood turner Rent 8%
- Sales of wood & tools 8%
- Auction 3%
- Other 9%



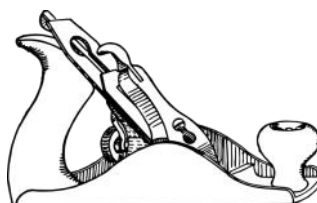
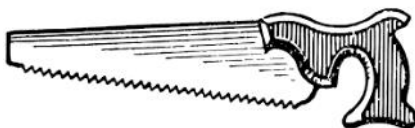
Expenses Came from the Following areas:

- Rent 28%
- Asset Purchases/ tools 23%
- Utilities 16%
- Classes expenses 13%
- Shop expenses 7%
- Office & miscellaneous 6%
- Other 9%



More detailed financial figures are available in the -Gary Mielke, Treasurer "Members Only" area of the web site.

If you would like additional financial information or are interested in helping out with membership, tracking training class payments or assisting in the treasury function or any other area of interest please contact me.



JANUARY SPECIALS

4/4 White Oak S2SSLR to 25/32"

\$3.79 per board foot

4/4 Aromatic Cedar S2SSLR to 25/32"

\$2.09 per board foot

4/4 African Mahogany S2SSLR to 25/32"

\$6.99 per board foot

4/4 Alder Superior S2SSLR to 25/32"

\$3.89 per board foot

4x8-3/4" Red Oak Custom cabinet plywood

\$65.99 per sheet

48" Wide-1/4" Thick Cork

\$7.49 per lineal foot

4243 SOUTH NOLAND ROAD

INDEPENDENCE, MO 64055

816-373-1710

STORE HOURS

MONDAY-FRIDAY: 9:30 TO 6:30

SATURDAY: 9:00 TO 4:00

SUNDAYS: CLOSED

From the Shop

Another New Year!! The New Year's Day open shop brought out 15 members to start the New Year with a day in the shop. As a convenience to the Members who are unable to make it to the normal day-time open shop the Guild will continue to offer open shop time on Federal Holidays.

The shop is changing with the addition of new equipment. With the addition of new equipment comes operational training!! The **Grizzly G9953ZX** is a 16" spiral cutter head jointer. The jointer operates somewhat the same as the Steel City and Powermatic jointers the Guild already owns. The exception is turning the machine off. There is a round **RED** knob with a black handle protruding from it located on the front of the jointer and just below the cutter



head. This is the normal off switch and brake for the cutter head. By rotating either left or right the motor starter will be disconnected and further pressure on the handle will slow the cutter head. Under normal operation the Emergency stop on the control panel is **NOT** to be used to turn the jointer off. This jointer will be connected to the Saw Stop dust collector and must be running when jointing boards.

The next new piece of equipment added to the shop is a **Grizzly G0544** 20" professional thickness planer. This machine's operation is totally different than the 15" Jet planer. There are more controls in different locations. There is a start button for the planer head **and** one to start the feed roller. The rate of feed is controlled by an adjustable belt drive located in the lower right rear of the machine. We will set this to a normal feed rate and should not be

adjusted without permission from the Shop Foreman. Another feature is the adjustable bed roller handle located on the right side of the in-feed table. The ability to adjust the bed rollers will make preparation of stock much easier and reduce snipe and the end of the cut. When planing rough lumber the rollers need to be raised to allow for irregularities in the wood. As the stock is coming to finish passes, the rollers can be lowered to reduce any snipe.

The Guild will be offering instruction on the operation of both pieces of equipment. Please take the time to learn how to operate the new equipment. Also, go to the Grizzly website and read the manuals for the [G0544](#) and [G9953ZX](#). Knowing how to properly operate this equipment will give better results.

Happy woodworking,

-Erwin Kurtz



Erwin testing the Grizzly G0544

January Hand Tool SIG Will Be Sharp

Once again it is time for the annual KCWG Hand Tool SIG Chisel and Plane Blade Sharpening Demo!

Have questions about getting your chisels and plane blades sharp? Angles? Wear-bevels? Jigs? Free-hand? Grinding? Grits?

Drop by for the January 24th KCWG Hand Tool SIG and we will talk about these things. The shop owns some

nice grinders, a good set of diamond stones and the ubiquitous Eclipse honing guide. But perhaps that's not what you have at home or maybe you are trying to decide what to get for yourself. Not all techniques and tools (gadgets?) are appropriate for everybody. So now is a good time to learn a bit more about grinding, sharpening and honing with combinations of power, sandpaper, strops, diamond stones, oil stones, waterstones

and more! We will discuss how to set yourself up to make keen edges without a lot of complication or cost.

Sharpening is a gateway skill to hand-work. Maybe it's time you stepped up your skills too!

-Rob Young rwyoung@ieee.org



We Are Smarter Than the Machines

Beginning woodworkers are sometimes told: "The woodworking machines in the shop are dangerous; they can kill you." The statement usually accomplishes the objective of getting their attention.

Well, the machines themselves will not initiate injury of you or other people. The machines do not meet late at night and decide who will get a blade stuck in the miter saw next week. They will not stalk you to the parking lot when you leave after dark.

The machines are YOUR tools. You can choose to control and use the tool deliberately and with proper knowledge. You can choose to use the tool with reckless abandon. Start with the operating rules set out by our Safety Committee and available on the web site. Our safety rules are great! They are well written, comprehensive, and tested over time. Start with guidance from a shop foreman. Ask questions. Ask more questions.

As you become knowledgeable and confident in operating the machine, learn how and why the machine reacts to your actions. Examine each of the safety rules to determine the purpose for the rule and the unsafe condition it strives to prohibit.

Why does the board need to lie flat on the miter saw? What could go wrong?

Why not use a miter gauge and the fence to crosscut a board? What could go wrong?

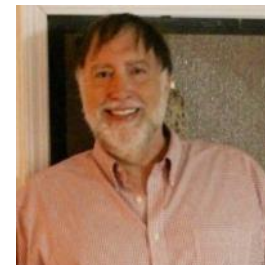
YOU control the tool and YOU control your material. Standing as far as you can away from the machine will not guarantee safety but it may make it difficult to control your material and operate the machine. Know the safe zones and the danger zones for each machine. Hold that long board firmly with both hands until you reach the leading edge of the table saw. Put your thumbs in a safe position on the edge of the material to control your work at the band saw or scroll saw. Use the heel of the push stick to fling that cut-off out of the way. If a table saw is going to toss a board, which side of board will it throw, which direction will it go and why? A firm grasp of the material, tight contact with the bearing, and a firm, confident, steady feed may actually prevent the router from throwing the board at you and ruining your material.

Following the safety rules is a minimum requirement. The more you know about your tool and how it works the better use you can make of the

machine. Respect the machine. It will act in a predictable manner. With knowledge, experience, and confidence you can predict the actions of the machine.

Safety and operating guidelines are often controversial and subject to different interpretations and passionate discussion. The above is not Guild policy or from any authoritative source. It is just my opinion. These comments assume that the equipment is well maintained and safe to use. We are lucky to have a volunteer Director of Assets and his team of volunteer Shop Foremen to see to these functions. If a machine is not functioning properly or needs maintenance, report the matter to the Foreman.

-Jack Gregg, Shop Foreman



It's Renewal Time!

Once again it is time to renew your membership. You have only until January 31, 2016 to get a \$5 discount on your membership. This discount is only available on the **Members Only** webpage. Also for those members that belong to both the Woodworkers Guild and the Woodturners Club, you will get an additional discounts worth \$10 (\$5 from each group). All of the memberships, both with and without the Wood Turners Club membership, can be renewed online using PayPal or at the shop by credit

card, check or cash.

After you have paid your dues, please stop at the membership office to pick up your new membership card. Our sponsors are nice and they will honor your 2015 card until about March 1. Then you will need your 2016 membership card to get your discount. This discount card can save you the amount of your membership.

For the members that joined this past fall at a prorated amount, you need to renew your

membership.

-George Rexroad, Membership Director



Kansas City Woodworkers' Guild

Increase your Woodworking skill and knowledge



A New Year; Many New Opportunities

It's time to get into action and begin those woodworking tasks that you were putting off until next year. The New Year is here! How about starting a new project or learning a new woodworking skill, possibly even getting involved in the training program at the Guild.

Veneering & Marquetry

There are many opportunities for you to grow your skills and help others by your involvement in training. We have scheduled the Veneering and Marquetry classes with Paul Schurch for April 21 - 24 and there are seats available in both of the classes. Paul is an internationally known craftsman and his classes will be on an advanced level. We have boot camp classes tentatively planned for February 6 and 20 from 9:00 AM to 5:00 PM with Ron Lomax and David Roth to help you better prepare for Paul's classes.

Shaker Boxes

We have scheduled a Shaker Box Making class with John Wilson and Eric Pintar followed by a Making Wooden tools Class for June 10-11-12. John has conducted several classes for us over the years and it is always a highlight of our training to bring him in for a class. You will make a set of five graduated Shaker Boxes and if you

KCWG Events

Happy New Year to all of our members. We had a really great year last year. We are hoping for an even better year in 2016. With 2015 now behind us, we have a few exciting events going on.

Lie-Nielson Hand Tool Event

January 14th through January 16th we will have Lie-Nielson in our shop demonstrating their tools and selling them. So come ready to fill up your toolbox with some top of the line hand tools. Thursday night is for KCWG members only. We get 10% discount and free shipping on Thursday only. Friday and Saturday are open to the public.

wish you can sign up for his Wooden Tool Making class on Sunday.

Suggest a Class

We are in the planning stages for an advanced level class in the fall. If you have a suggestion for a topic or know an instructor that you would like to invite, please send me your suggestions and contact information at training@kcwoodworkersguild.org.

Intro to Basic Woodworking

We have had great success in our Basic Woodworking classes in 2015. The class scheduled to begin in February is fully enrolled with a waiting list of seven people wanting to enroll. With this significant demand, we are trying to arrange another class as soon as possible.

Hand Tool School

The Hand Tool School class presented by Rob Young is scheduled to begin on January 21. This class is fully enrolled and we are trying to arrange for a repeat class as soon as possible.

Skill Building Seminars

We are in the process of reviving our practice of conducting free skill building seminars. These

will usually be presented on Saturdays, but the possibility of week day evenings is being considered.

Enjoy the Experience

Finally, I need your help. We are trying to expand our staff of members who are willing to be instructors for classes, seminars and workshops. Our membership growth has increased the demand for basic and intermediate classes. I know your response, "I am not that good at woodworking and I can't stand up and teach a class". Well, that is not true. If you are willing to try, we will help you design and organize the class. We will pair you with an experienced member to practice and learn the ropes. We value your experience and willingness to try. Believe me. You will probably enjoy the experience.

Make a New Year's resolution to always check the Guild training page online and get involved.



Kansas City Woodworking Show

It is time again to start asking for volunteers for the wood working show. The show will be held at KCI Expo Center on April 8th - 10th. Friday 12-6, Saturday 10-6, Sunday 10-3. Admission is \$10 online and \$12 at the door (cash only).

KCI Expo Center

11730 N Ambassador Dr.

K.C. MO 64153

We need volunteers to help man our booth at

this expo. We will more than likely have a sign up genius set up to sign up with So be looking for it coming up!

Again, I would like to thank all the members that made this past year a great one. Big thanks go out to all who volunteered on every event that we had. We couldn't have done it without your help!

-Bill Lintner, Events Director



KCWG Open Shop Schedule for January 2016

Hour Beginning	9	10	11	12	1	2	3	4	5	6	7	8	9
1	Fri, Jan 01	Erwin Kurtz											
1	Sat, Jan 02	Bill Lintner											
1	Sun, Jan 03		Chuck Saunders					Power Tool SIG					
Hour Beginning	9	10	11	12	1	2	3	4	5	6	7	8	9
1	Mon, Jan 04									Gary Strohm			
1	Tue, Jan 05	Jerry Thompson		Craig Arnold							Kara Paris		
1	Wed, Jan 06	Roger Bartlett									LC Meeting		
1	Thu, Jan 07	Erwin Kurtz		Gary Mielke									
2	Fri, Jan 08									David Kraatz			
2	Sat, Jan 09	David Kraatz						Safety Orientation					
2	Sun, Jan 10		Rob Young					Mark Waugh					
Hour Beginning	9	10	11	12	1	2	3	4	5	6	7	8	9
2	Mon, Jan 11										Woodturners		
2	Tue, Jan 12	Jim Stuart		Ron Lomax			Jack Gregg			Roland Mohler			
2	Wed, Jan 13										Scroll Saw SIG		
2	Thu, Jan 14	Erwin Kurtz		Gary Mielke							Lie-Nielsen Show		
3	Fri, Jan 15		Lie-Nielsen Tool Show										
3	Sat, Jan 16		Lie-Nielsen Tool Show										
3	Sun, Jan 17		Chuck Saunders										
Hour Beginning	9	10	11	12	1	2	3	4	5	6	7	8	9
3	Mon, Jan 18									Gary Strohm			
3	Tue, Jan 19	Jerry Thompson		Craig Arnold									
3	Wed, Jan 20	Roger Bartlett									General Meeting		
3	Thu, Jan 21	Erwin Kurtz		Gary Mielke						Kevin Thomas			
											Handtool School		
4	Fri, Jan 22									David Kraatz			
4	Sat, Jan 23	David Kraatz											
4	Sun, Jan 24		Rob Young					Hand Tool SIG					
Hour Beginning	9	10	11	12	1	2	3	4	5	6	7	8	9
4	Mon, Jan 25												
4	Tues, Jan 26	Jim Stuart		Ron Lomax			Jack Gregg			Roland Mohler	Woodcarvers		
4	Wed, Jan 27										CNC SIG 6:30		
4	Thu, Jan 28	Erwin Kurtz		Gary Mielke							Handtool School		
5	Fri, Jan 29									Jack Gregg			
5	Sat, Jan 30	Gary Mielke		Jack Gregg									
5	Sun, Jan 31		Rob Young										



Kansas City Woodworkers' Guild

Increase your Woodworking skill and knowledge



January, 2016, No. 1

**Find Us : KC Woodworkers' Guild
3189 Mercier
Kansas City, MO 64111-3631**

Next General Meeting : January 20, 2016.

Find us on the Web at www.kcwoodworkersguild.org

Have a suggestion for the Guild? Idea for a program, clinic, workshop? Contact us using the emails to the right.



**"There is only one thing that makes a dream impossible to achieve: the fear of failure."
— Paulo Coelho**

Position	Name
President : president@kcwoodworkersguild.org	Chuck Saunders
Vice-President : vicepresident@kcwoodworkersguild.org	Roland Mahler
Secretary : secretary@kcwoodworkersguild.org	Sharon Pugh
Treasurer : treasurer@kcwoodworkersguild.org	Gary Mielke
Member-at-Large : memberatlarge@kcwoodworkersguild.org	Kevin Thomas
Director of Events : events@kcwoodworkersguild.org	Bill Lintner
Director of Membership : membership@kcwoodworkersguild.org	George Rexroad
Director of Communication : communication@kcwoodworkersguild.org	Dick Kammer
Director of Sponsorship : sponsorship@kcwoodworkersguild.org	Craig Arnold
Director of Training : training@kcwoodworkersguild.org	David Kraatz
Director of Programs : programs@kcwoodworkersguild.org	Toby Liu
Director of Assets : assets@kcwoodworkersguild.org	Erwin Kurtz
Director of Safety : safety@kcwoodworkersguild.org	Chuck Slagle
Newsletter Editor : newsletter@kcwoodworkersguild.org	Brandon Mason
Web Master : webmaster@kcwoodworkersguild.org	
Librarian : library@kcwoodworkersguild.org	John McKee
Historian : g.creek@att.net	Ann Creek